

Project Team



Tanya Denmark
Research Fellow,
DCAL, UCL



Jo Atkinson
Clinical Research Psychologist,
DCAL, UCL



Bencie Woll
Professor of Sign Language
and Director of Deafness,
Cognition and Language
Centre (DCAL), University
College London (UCL)



Jane Marshall
Professor of Aphasia,
City University, London



Alys Young
Professor of Social Work,
The University of Manchester

For more information, look at our website at...
www.manchester.ac.uk/deafwithdementia

Who we work with?

This work is part of the Deaf with Dementia Project. A 3 year project funded by the Alzheimer's Society.

It is a partnership between :-



Please contact us at:

For further information about both projects, please contact:

✉ **The Project Team:** Tanya Denmark,
Jo Atkinson, Bencie Woll,
Older Deaf Healthy Brain Project:
Deafness Cognition and Language
Research Centre,
University College London,
49 Gordon Square,
London WC1H 0PD

@ **E-mail:** olderdeaf@ucl.ac.uk
☎ **Fax:** 020 7679 8691

Older Deaf



Healthy Brain Project

What is the
normal pattern of
ageing in Deaf adults?



Part of the
Deaf with Dementia project





Why is it important for us to know more about older deaf healthy brains?

We know that thinking changes as we get older, it gets a bit harder to solve problems and think of names for things.



Small changes are part of normal ageing, however big changes may point to a problem such as dementia.

We need to know what is normal and what may be something to worry about.

The research has been done for hearing people, but not for Deaf people.

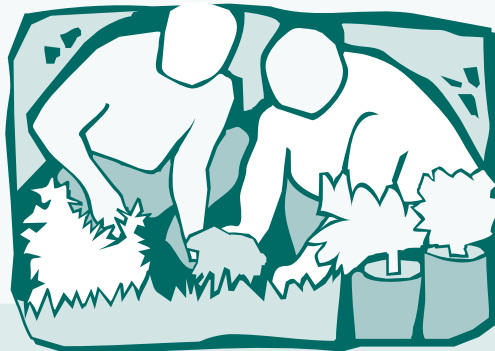


Our Project

We have developed tasks to help us understand older deaf healthy brains in Deaf BSL users. This information will help us to develop tests for dementia in BSL.



Early diagnosis of dementia is important, so that Deaf people can live well with dementia, access services and treatments, and plan for the future.



EDDJ Rally, Lowestoft 2010

In October 2010, 800 Deaf people will attend the England Deaf Derby and Joan holiday in Lowestoft.

With their help we would like to collect the data from 250 Deaf adults aged 50-95 years during this week.

This project is important as it will help us to develop the first BSL tasks for dementia in older Deaf people. As more Deaf people live longer, more Deaf people are likely to be affected by dementia, so these tests are urgently needed.



If you are attending the England Deaf Derby and Joan Event in Lowestoft and would like to help with our research, please contact us.

We would like to hear from you!